



**INDYCNC SEMI-AUTOMATIC BEAM SAW / PANEL SAW
MODELS IC6226 / IC6233**



High Quality Parts

Air floating work table



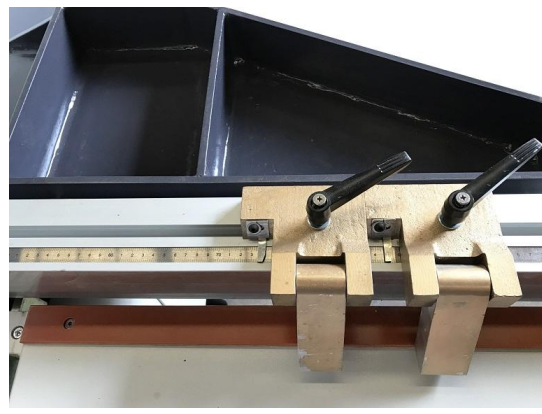
Air blower



Adjusting ruler in back side



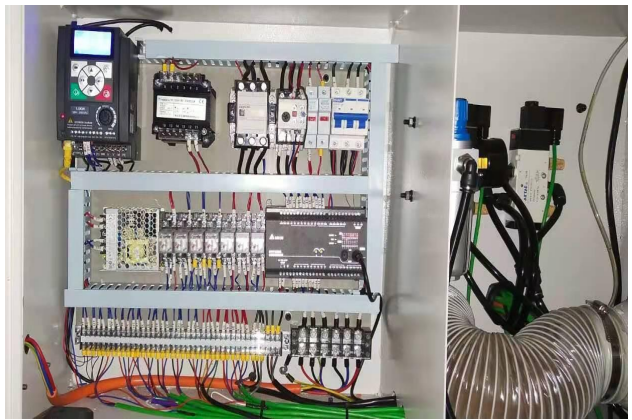
Adjusting ruler on left side



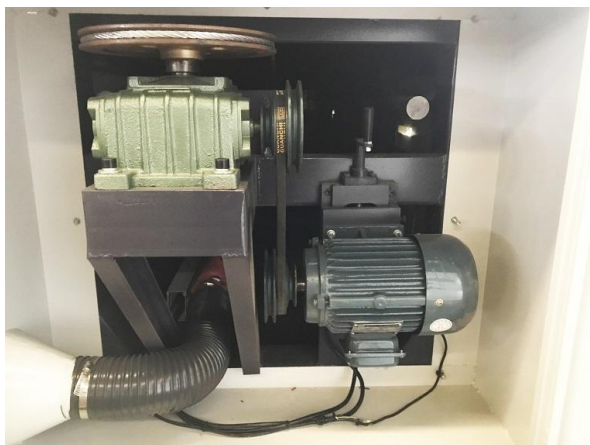
Two saw blade carrier



Electric components(Schneider/Omron)



Wirerope transmission



Emergency stop



Round rail transmission



Side view (with air floating table)



Configuration

- 1. Machine body: welded by steel, has been tempering treatment, ensure the stability and high accuracy, no deformation.**
- 2. Main saw dimension: $\varnothing 355 \times \varnothing 30 \times 3.5 \text{mm}$**
- 3. Scoring saw dimension : $\varnothing 160 \times \varnothing 25.4 \times 3.2 \text{mm}$**
- 4. Main saw motor: IC6226 9kw (12hp) / IC6233 11KW (14.75hp)**
- 5. Electric components: from Schneider and Omron**
- 6. Control system: Taiwan Delta PLC**

BASIC PARAMETERS	MODEL IC6226	MODEL IC6233
Max cutting length	2600mm	3250mm
Maximum cutting thickness	70mm	70mm
Main saw RPM	5600rpm	5600rpm
Scoring saw RPM	5600rpm	5600rpm
Main saw spindle Diameter	30mm	30mm
Scoring saw spindle	24.5mm	24.5mm
Cutting speed	0-45m/min	0-45m/min
Main saw power	9kw / 12hp	11kw / 14.75hp
Overall size Length x Deep x Height	5200x3550x1750mm 204''x139''x69''	5200x3550x1750mm 228''x139''x69''
Weight	2500kg / 5.511lbs	3000kg / 6.613lbs
Accuracy	± 0.25mm	± 0.25mm
Voltage	220V / 60hz / 3 phase	220V / 60hz / 3 phase

Technical Support

- 1.Before buying the machine: sales people will introduce all information of the machine to customer, if customer come to factory, we will make sample product for customer
- 2.After buying the machine: if any problems of machine happen, customers can find our technical engineer by email, phone, SMS, Wechat, whatsapp etc, we will reply once we see the message.
- 3.We will provide free training for customer in our factory;
4. Sending engineer to customer's location is optional, but the related fees should be paid by customer

After sales service:

- 1.The whole machine guarantee for 12 months
- 2.During the guarantee period, if malfunction caused by non-artificial factor, we will provide consulting service for the customer, if the damage can not be fixed, we will send replaces parts to the customer, customer should paid the freight cost.

Packing:

